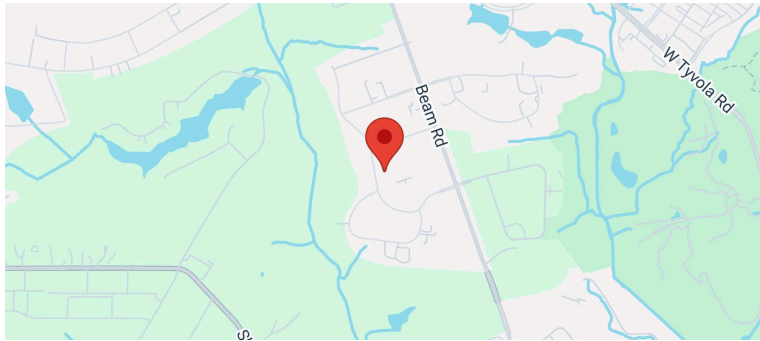


# COFFEY CREEK INTERNATIONAL BUSINESS CENTER

2220 CENTER PARK DRIVE • CHARLOTTE, NC 28217

ARDEN | LOGISTICS PARKS



Square Footage / Acres: 395,891 sqft & 11.56 Acres

Year Built:

# of Buildings: 22

Coffey Creek International Business Center is a high quality office and warehouse property.

- Access to I-77, I-485, I-85, and Hwy 52
- Located near the Charlotte Douglas Airport
- Dock-high loading - Suite dependent
- Approximate clear height 12-18 feet
- Responsive and dedicated management team located on-site

## Property Summary

AVAILABLE SF	1,196-34,557 SF
BUILDING SIZE	395,891 SF
MARKET	Charlotte

For more information, please contact:

**ERIC RIDLEHOOVER**

LEASING CONTACT

P. 704.905.8040

E. ERIC.RIDLEHOOVER@CUSHWAKE.COM

**FERMIN MONTES DE OCA**

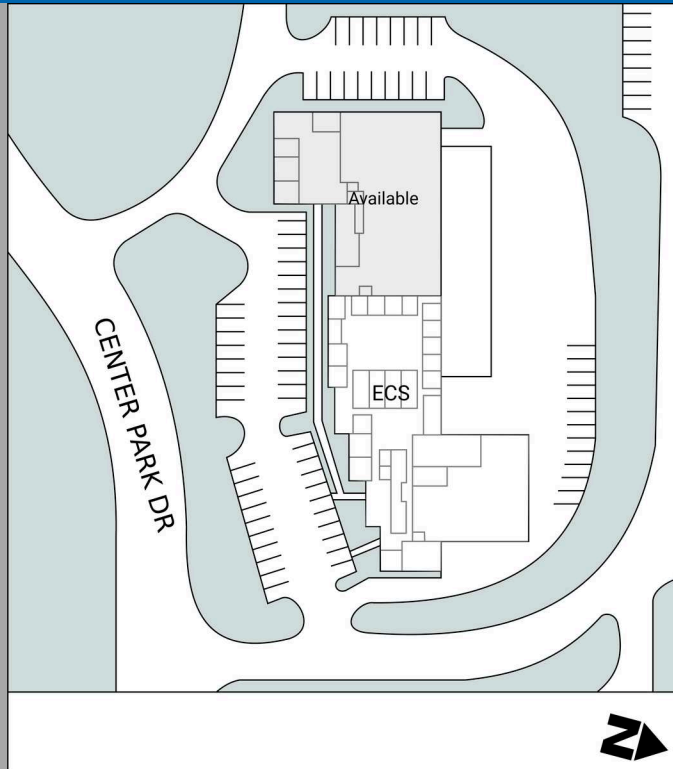
LEASING CONTACT

P.

E. FERMIN.DEOCA@CUSHWAKE.COM

# COFFEY CREEK INTERNATIONAL BUSINESS CENTER

2220 CENTER PARK DRIVE • CHARLOTTE, NC 28217



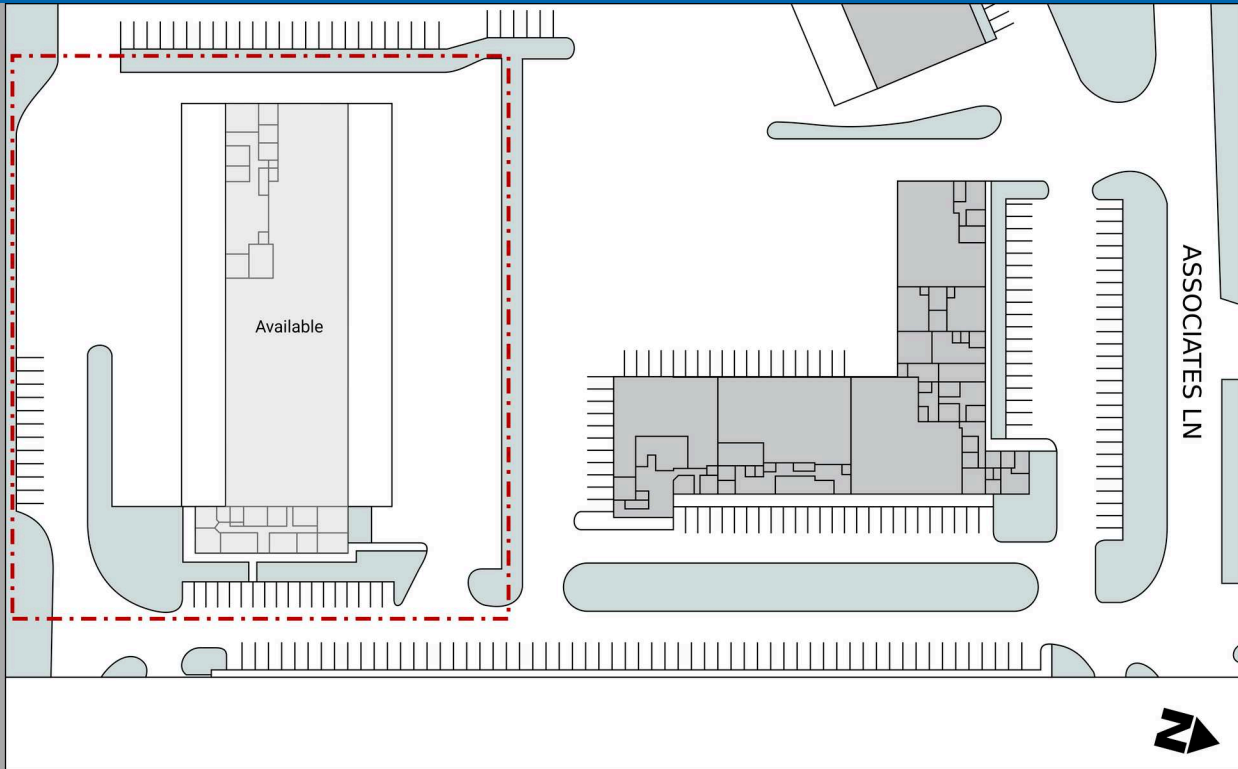
■ AVAILABLE    ■ OCCUPIED

## Current Availabilities

BUILDING	SUITE	TOTAL SIZE
1900 Center Park Drive	C900J	10,764

# COFFEY CREEK INTERNATIONAL BUSINESS CENTER

2220 CENTER PARK DRIVE • CHARLOTTE, NC 28217



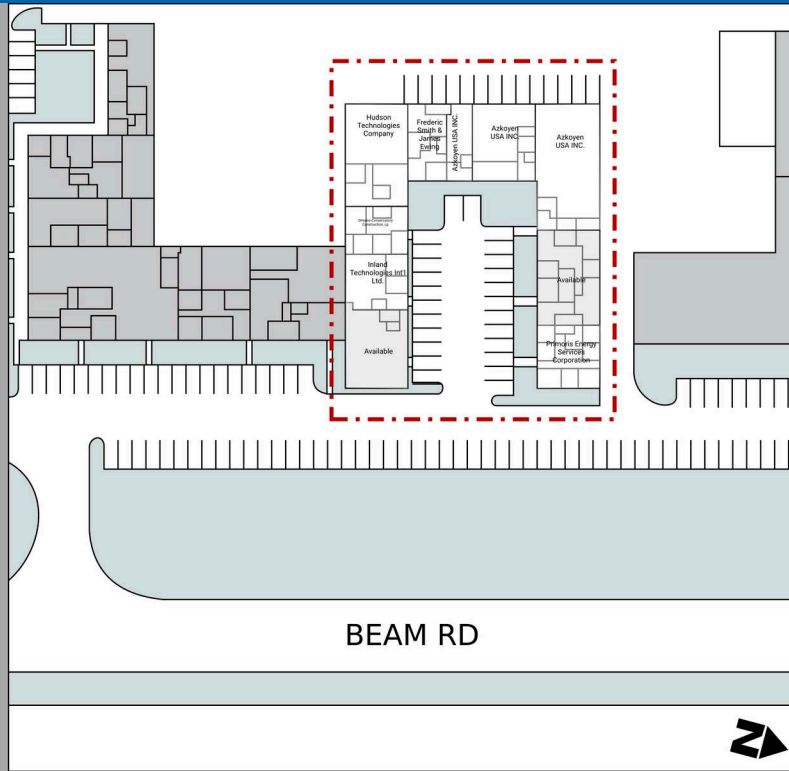
■ AVAILABLE    ■ OCCUPIED

## Current Availabilities

BUILDING	SUITE	TOTAL SIZE
1836 Center Park Drive	C836A	24,004

# COFFEY CREEK INTERNATIONAL BUSINESS CENTER

2220 CENTER PARK DRIVE • CHARLOTTE, NC 28217



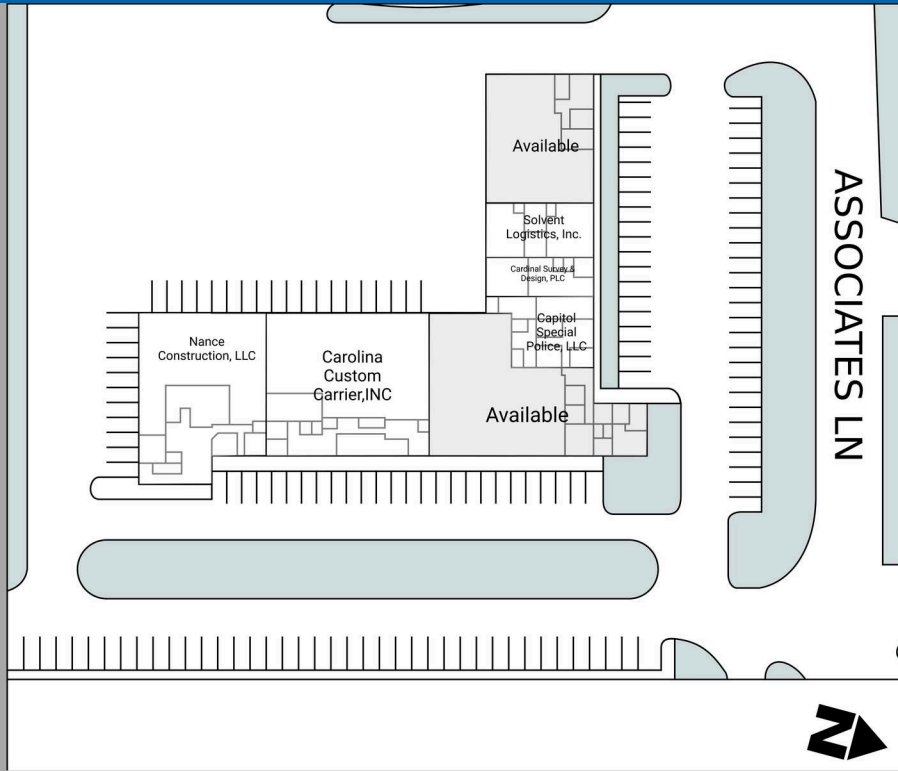
■ AVAILABLE    ■ OCCUPIED

## Current Availabilities

BUILDING	SUITE	TOTAL SIZE
3809 Beam Road	B809A	2,031
3809 Beam Road	B809J	1,196

# COFFEY CREEK INTERNATIONAL BUSINESS CENTER

2220 CENTER PARK DRIVE • CHARLOTTE, NC 28217



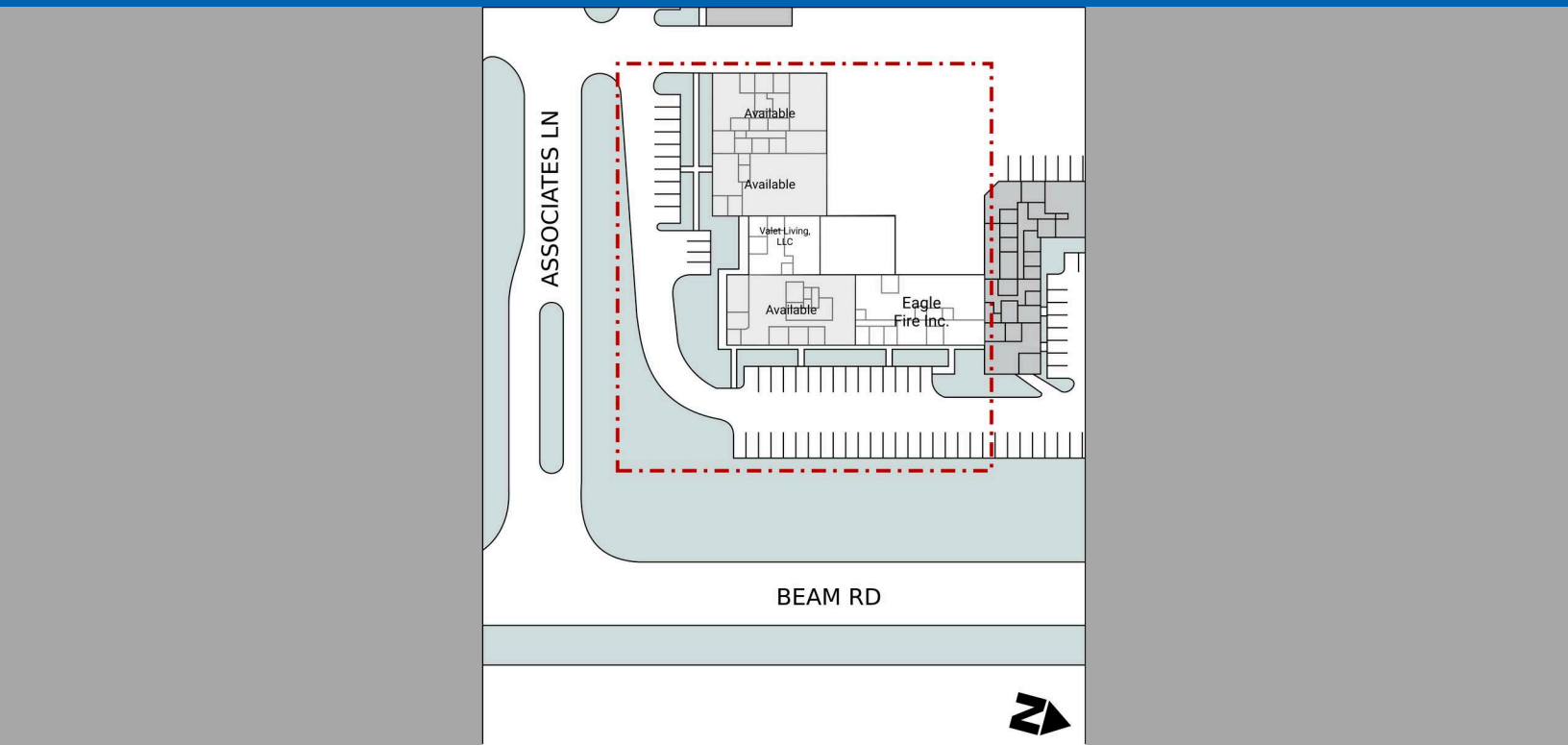
■ AVAILABLE    ■ OCCUPIED

## Current Availabilities

BUILDING	SUITE	TOTAL SIZE
1901 Associates Lane	A901A	4,197
1901 Associates Lane	A901F	6,815

# COFFEY CREEK INTERNATIONAL BUSINESS CENTER

2220 CENTER PARK DRIVE • CHARLOTTE, NC 28217



■ AVAILABLE    ■ OCCUPIED

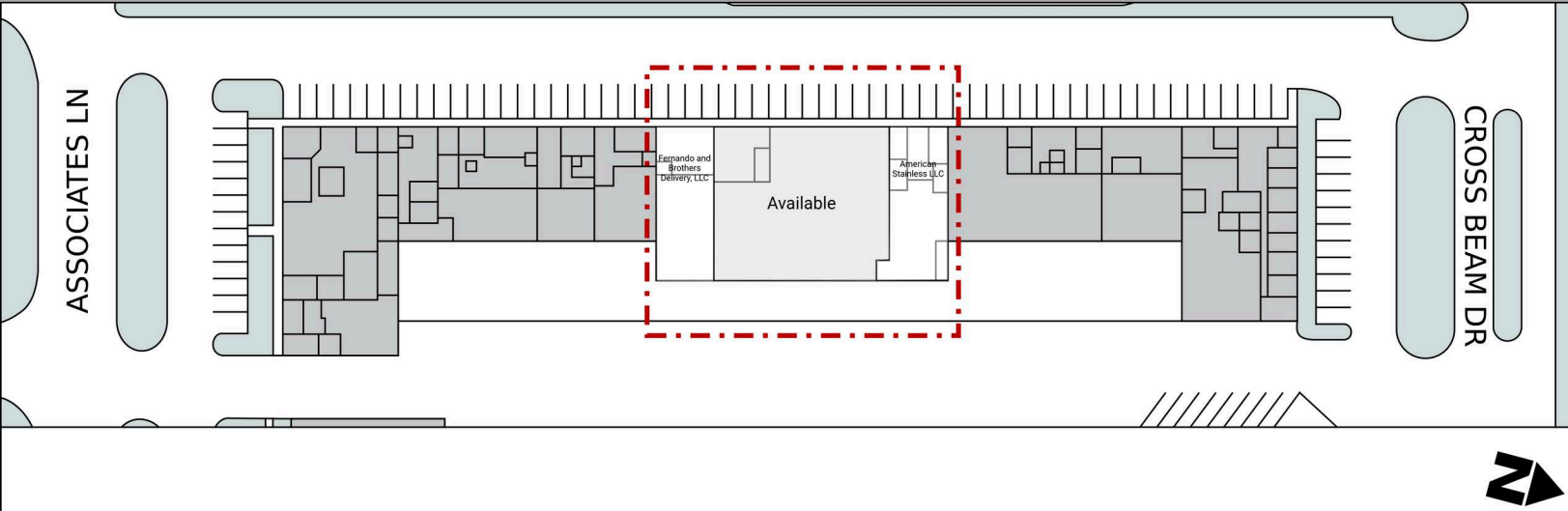
## Current Availabilities

BUILDING	SUITE	TOTAL SIZE
1800 Associates Lane	A800A	4,401
1800 Associates Lane	A800C	3,588
1800 Associates Lane	A800E	4,488



# COFFEY CREEK INTERNATIONAL BUSINESS CENTER

2220 CENTER PARK DRIVE • CHARLOTTE, NC 28217



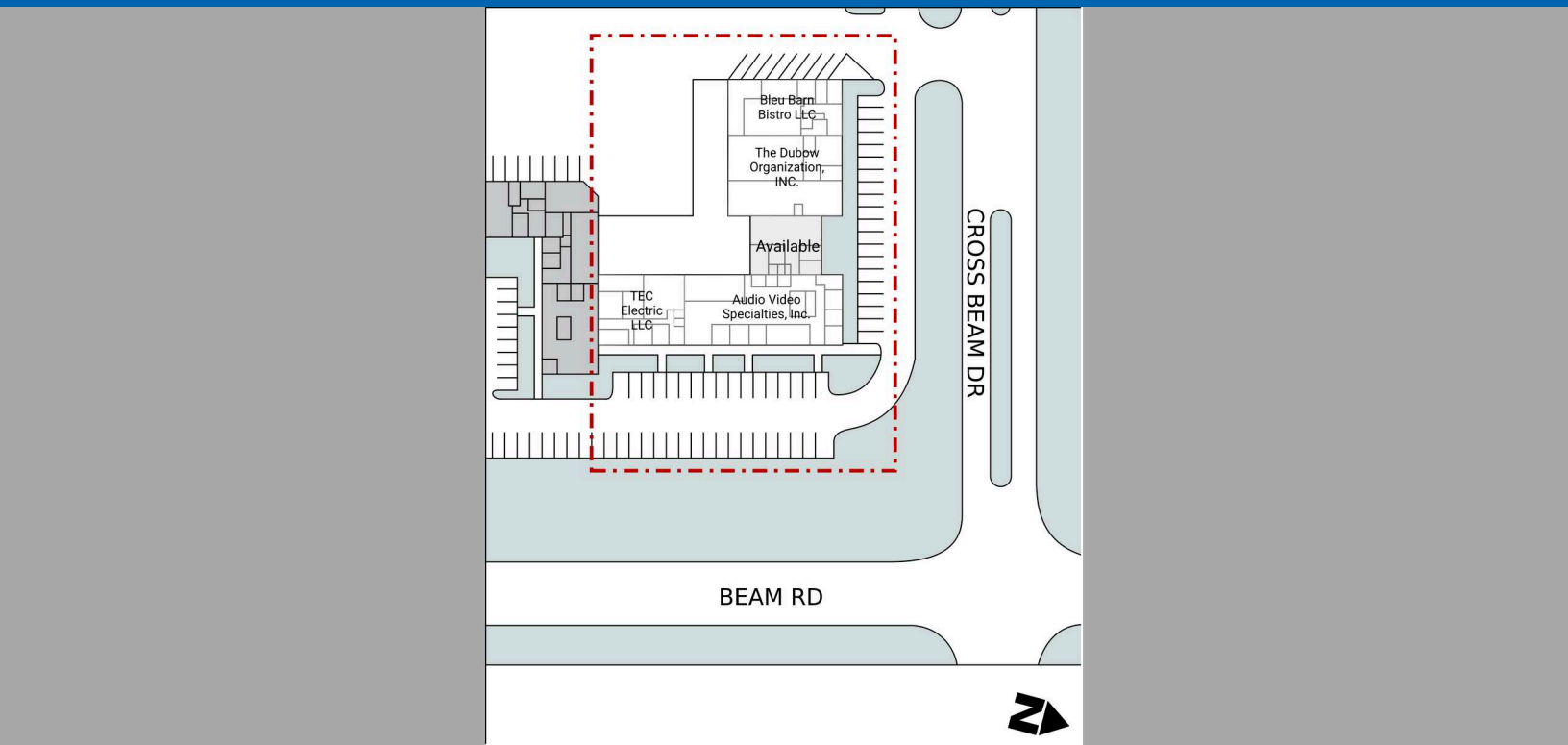
■ AVAILABLE    ■ OCCUPIED

## Current Availabilities

BUILDING	SUITE	TOTAL SIZE
1833 Cross Beam Drive	1833B	7,133

# COFFEY CREEK INTERNATIONAL BUSINESS CENTER

2220 CENTER PARK DRIVE • CHARLOTTE, NC 28217



■ AVAILABLE    ■ OCCUPIED

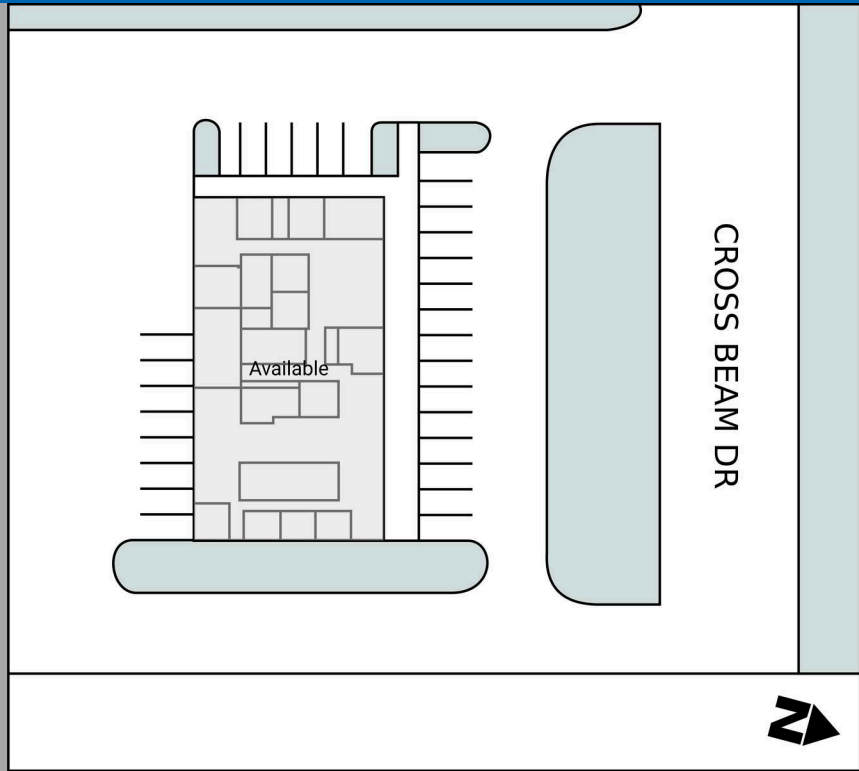
## Current Availabilities

BUILDING	SUITE	TOTAL SIZE
1801 Cross Beam Drive	1801G	2,011



# COFFEY CREEK INTERNATIONAL BUSINESS CENTER

2220 CENTER PARK DRIVE • CHARLOTTE, NC 28217



■ AVAILABLE    ■ OCCUPIED

## Current Availabilities

BUILDING	SUITE	TOTAL SIZE
2001 Cross Beam Drive	100	34,557